

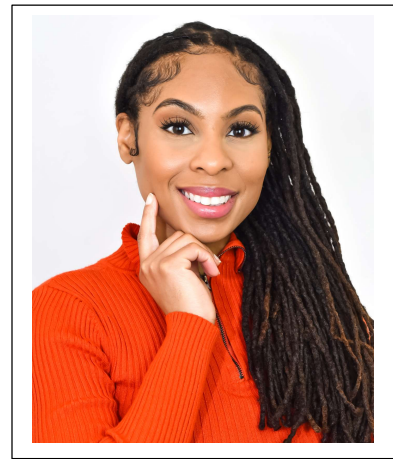
# SHANNA MACK

Non-Union Actress

Represented by Talent Unlimited

<https://www.talentunlimited.com/talent/shanna-mack/>

**Height:** 5' **Weight:** 95 lbs **Hair:** Black **Eyes:** Brown



## FILM

Rise and Shine	Extra	Wright/Laird Casting
Industrial Evolution Under The Sun 2	Supporting Actress	Tady Brothers Production
Engage Maternal Newborn and Pediatrics	Lead	Ascending Learning

## COMMERCIAL

The Magic Number	Bar Patron Extra	Lord Danger Productions
Sacred Leaf KC	Outdoors B-roll	Fasone & Partners
Branson Silver Dollar City	Amusement Park Visitor	Validate Productions
How I Mazuma	Mazuma Employee Extra	Bark Productions

## PRINT

Tivona Fashion	Issue 1 Magazine
Thailand Fashion Week Times	Volume 1 Issue 2 Magazine
KC Parks and Recreation	Website
Nature Made Me	Website
Pfizer Clinical Trials	Website
Hallmark Ideas & Inspiration Kwanzaa	Website

## SPECIAL SKILLS:

Photography, Runway Modeling, Valid U.S. Passport, Painter, Public Speaking, Improvisation, Beginner Guitarist